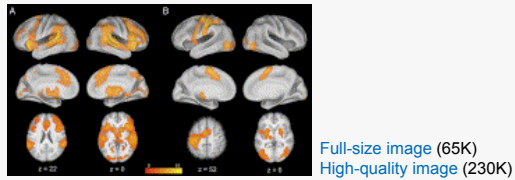
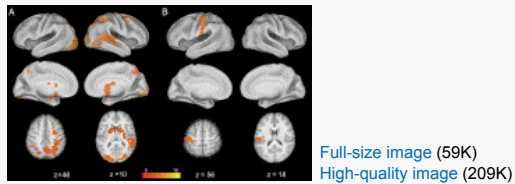


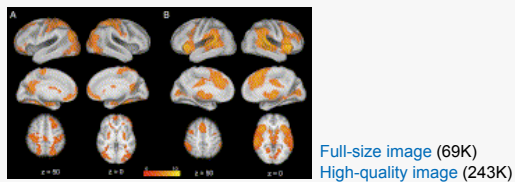
Appendix A. Supplementary data



Supplementary Fig. 1. Whole-brain activation in the Stop-signal task: (A) StopInhibit-Go and (B) Go-Null group-level contrasts corrected for whole-brain multiple comparisons. Statistical maps were projected onto an average cortical surface using CARET; axial slices are included to show additional activation with coordinates in MNI space. (Right = Right.)



Supplementary Fig. 2. Whole-brain activation in the Stop-signal task: (A) StopInhibit-StopRespond and (B) StopRespond-StopInhibit group-level contrasts corrected for whole-brain multiple comparisons. Statistical maps were projected onto an average cortical surface using CARET; axial slices are included to show additional activation with coordinates in MNI space. (Right = Right.)



Supplementary Fig. 3. Whole-brain activation in the Stop-signal task: (A) Go-StopRespond and (B) StopRespond-Go group-level contrasts corrected for whole-brain multiple comparisons. Statistical maps were projected onto an average cortical surface using CARET; axial slices are included to show additional activation with coordinates in MNI space. (Right = Right.)